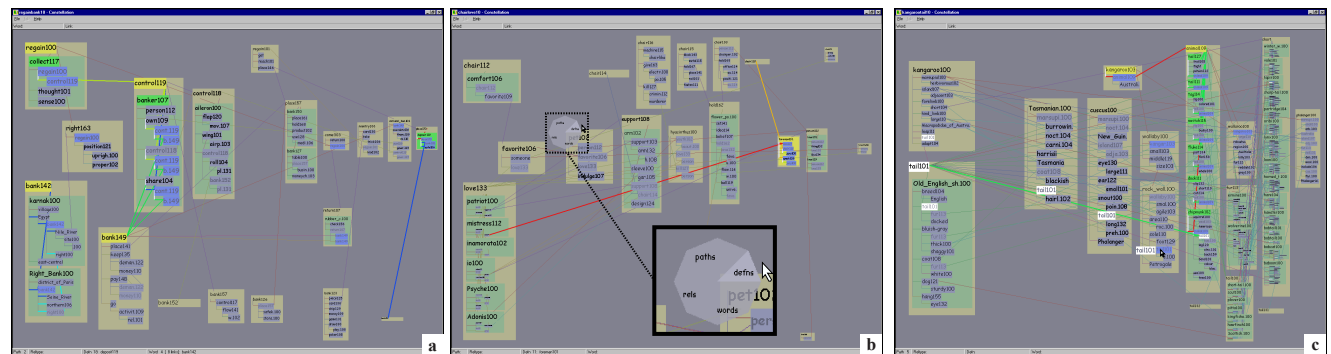


**Color Plate 1:** Aspirin-headache 50 path dataset. The strongly associated words in this query words create a long characteristic T shape. **a)** Global view with first path highlighted. The cursor hovers over *fever108* so all instances are marked with white label boxes. Headwords like *aspirin100* are allocated more space than leafwords. The inset shows that some small implausible words on the right are drawn simply as lines. **b)** Local view of the same three definition graphs as previous inset, after intelligent zooming. Space is allocated more equally between headwords and leafwords. Master words are black and shared proxies are grey. Other highlighted constellations are shown: **c)** path 37, **d)** definition graph of *aspirin100*, **e)** words connected to *accompany109*, **f)** relations of type "modifier" colored cyan.



**Color Plate 2:** **a)** Regain-bank 10 path dataset. Since the query words are dissimilar there are few shared words. Three constellations are composed: path 2, a green definition graph for *deposit119* on the far right, and words connected to *bank142* on the far left. **b)** Chair-love 10 path dataset. The translucent popup pie flipper interface is shown in the inset, while choosing the *foreman101* definition graph constellation. **c)** Kangaroo-tail 10 path dataset. The query words are somewhat related. Many green definition graph boxes are associated with the pathword *animal109*, which is on the highlighted path 5. All instances of *tail101* are marked by the hovering cursor.